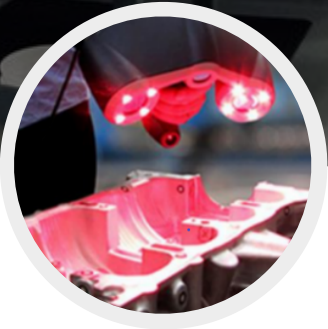


OUR CAPABILITIES



Versatile Reverse Engineering

3D scanner and dedicated engineering teams allow us to reverse any part



Production based on original drawings

Huge original drawings database allows to produce top quality components



Technical Improvement

Parts technical characteristics improvement via typical original issues elimination and fast prototyping thanks to 3D printing



Best in the world CNC machines

Production done on CNC machines by YAMAZAKI MAZAK, DMG MORI etc.

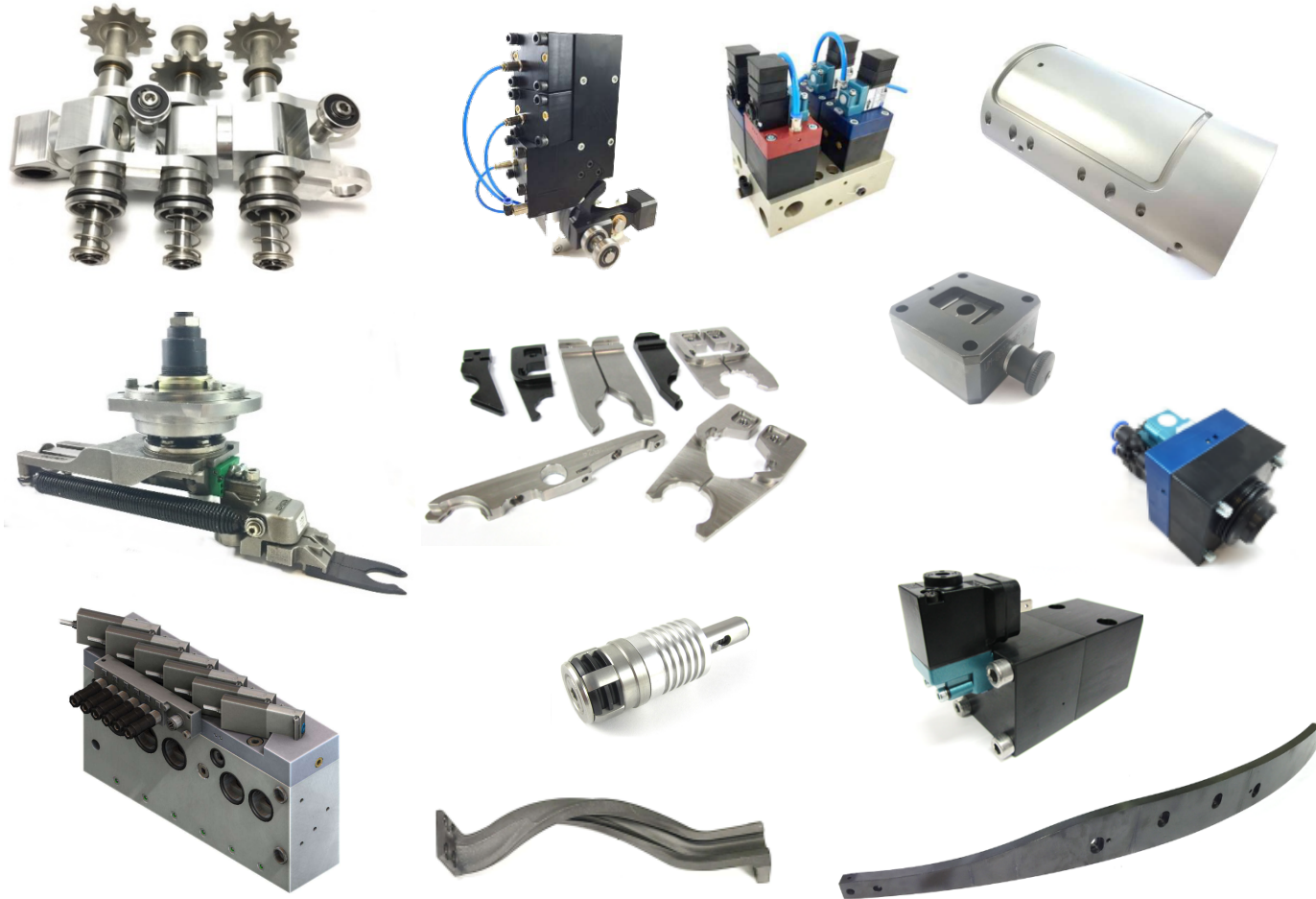


100% exit quality control

Quality control of each spare part including automated inspection procedures

PRODUCT CATALOG

FOR SIDEL BLOWING MACHINES



OVEN CHAINS

VALVES & MANIFOLDS

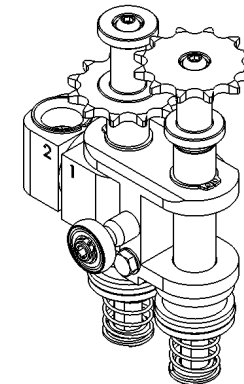
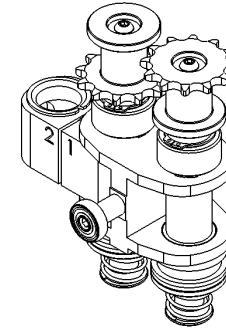
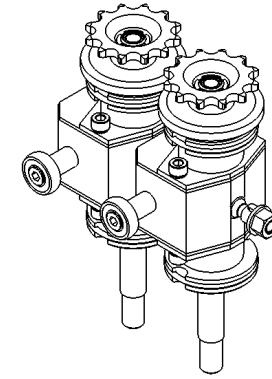
GRIPPERS, SPINDLE TIPS, EJECTORS

CAMS & GUIDES

MOLD SHELLS AND BASE

OVEN CHAINS

- All Sidel chains available
- Improved all-bearing chains available for S2 and Universal
- Rebuild services and rebuild kits available for all models
- 20-30% less expensive than OEM
- Manufactured 30+ Sidel chains that are currently in operation at customer facilities



TOOL CHANGES & PERSO PARTS

- Spindle tips
- Grippers
- Ejectors
- Transfer wheels
- Guides



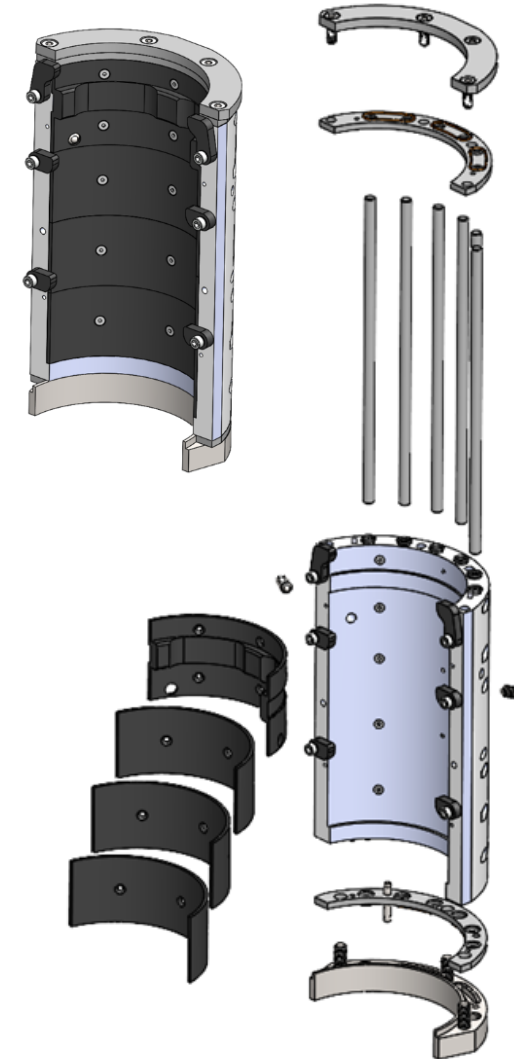
SPINDLE TIPS

- Improved design reducing misloading rate
 - 2 rings for more uniform pressure distribution
 - 5 segments for better preform loading
- Optional color-coding
- Produced several thousands



MOLD SHELLS

- OEM design
- Optional improvement with stainless steel inserts
 - Prevents corrosion, erosion and oxidation in the water-ways for cold set machines
 - Maintenance kit available
- Optional improvement with a protective sleeve
 - Greater mold shell protection extending service life
- Available in stainless steel
- Rebuild services offered



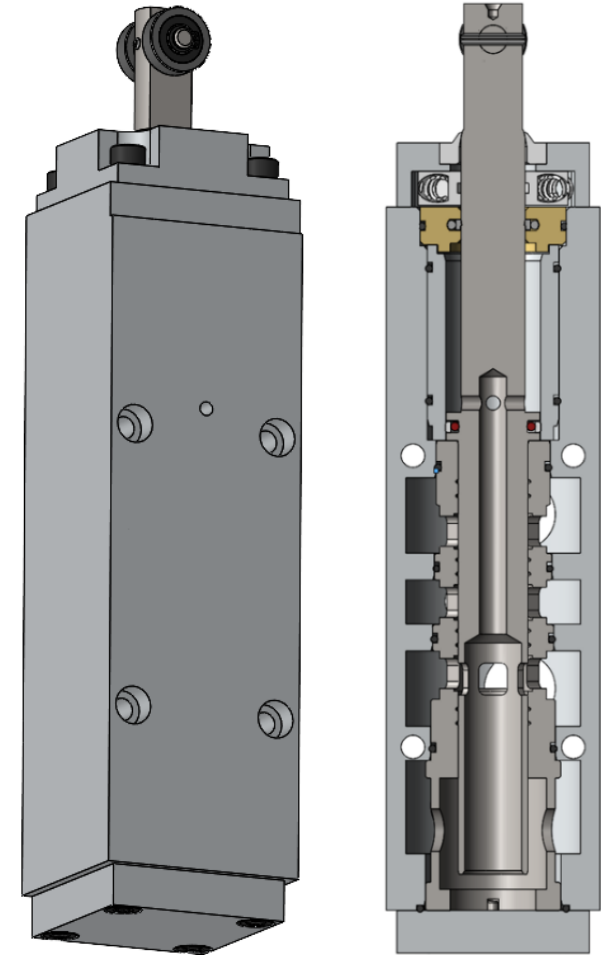
MOLD BASE & SUPPORT

- Hardened pneumatic mold base increasing service life
- Machined mold base support (vs casted OEM)



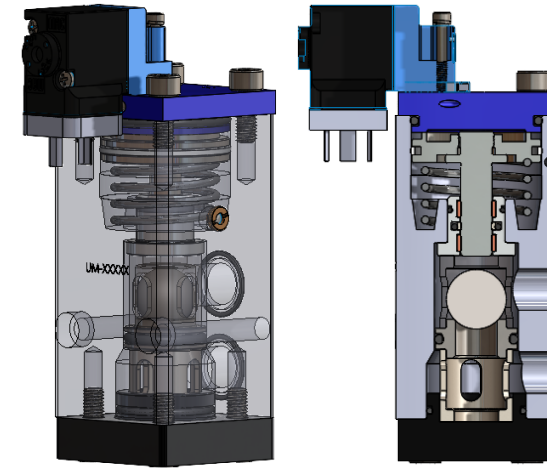
SERIES-1 3-WAY VALVES

- 3-way valves offered in both high flow & low flow
- Currently developing a new design that will eliminate all current leaking issues
- Rebuild kits available

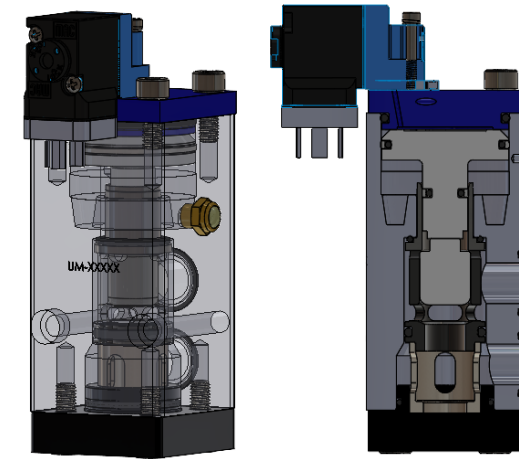


SERIES-2 VALVES

- Improved valve available
 - Better performance
 - Easier maintenance
 - ❖ Internal ball replaced by Universal design piston
- Rebuild kit available
- OEM-design stacked valves available



OEM BALL-DESIGN



IMPROVED PISTON DESIGN

UNIVERSAL SERIES COMPACT VALVES

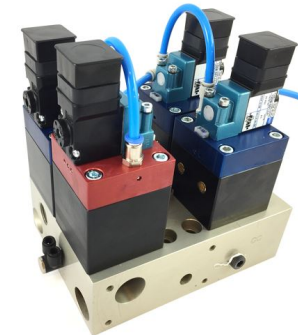
- Less expensive than OEM valve
- Improved compact valve
 - Fewer maintenance components
 - Easier installation
- 5+ years of service life
- Rebuild kit available
- Both original OEM design and improved compact valves are available



COMPACT BLOW

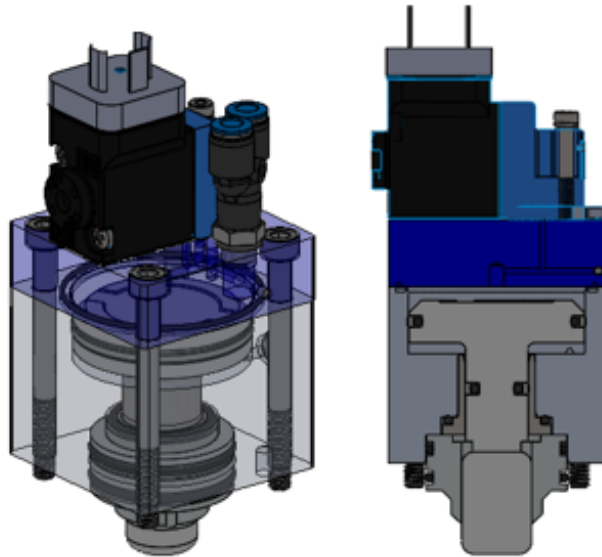


COMPACT EXHAUST

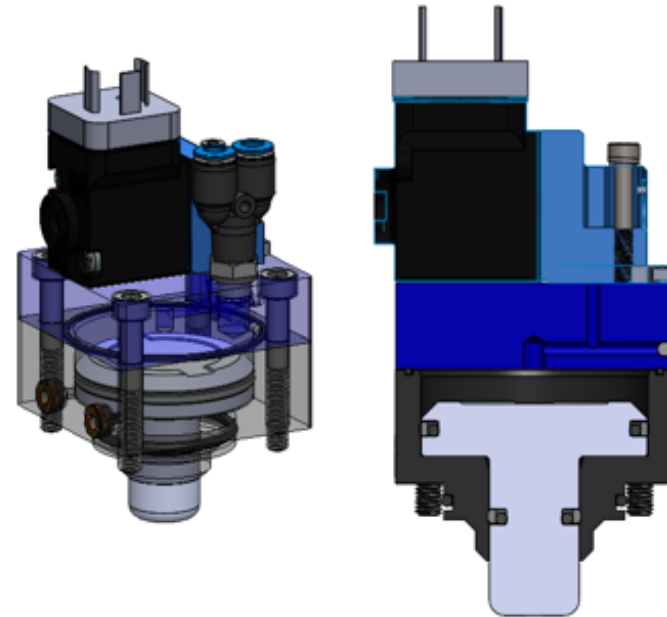


VALVE & MANIFOLD
ASSEMBLY

UNIVERSAL SERIES COMPACT VALVES



REGULAR



COMPACT

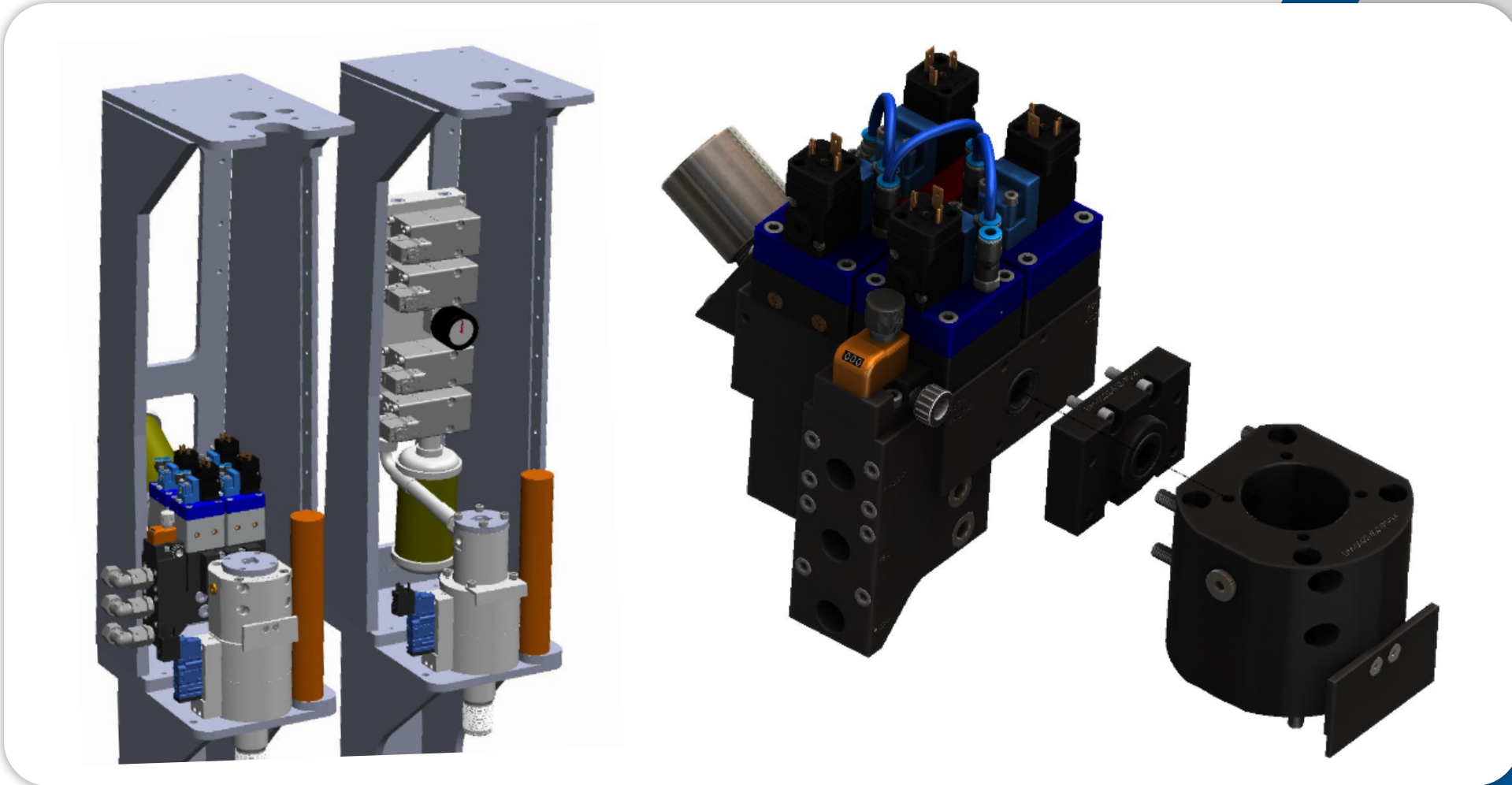
MANIFOLDS FOR UNIVERSAL SERIES RETROFIT

- Universal Retrofit Manifold
 - Significant savings of dead-space volume
- Allows use of Universal valves on S2
 - Better performance
 - Easier maintenance
 - Less expensive



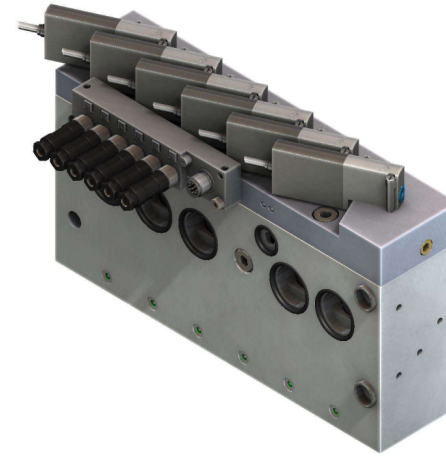
UNIVERSAL MANIFOLD

MANIFOLDS FOR UNIVERSAL SERIES RETROFIT



MATRIX SERIES BLOWING BLOCK (IMPROVED)

- Hardened main block
- Fully interchangeable with OEM
- Substantial savings on maintenance kits



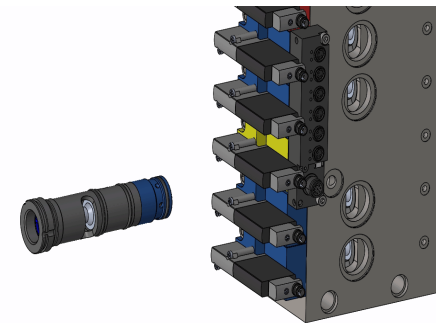
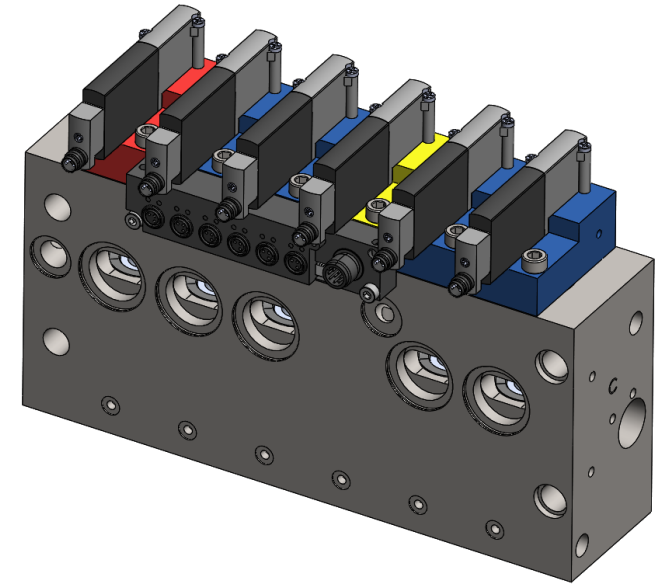
FESTO



MAC

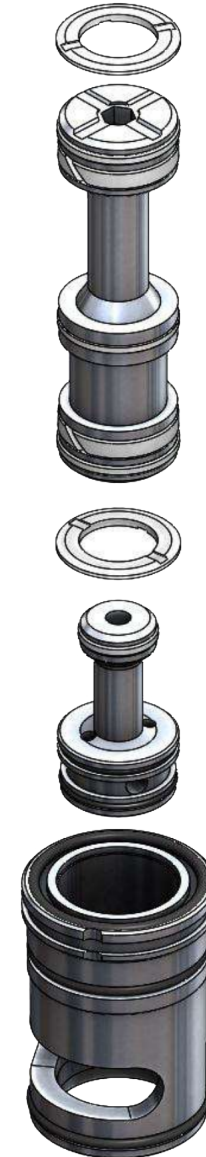
MATRIX SERIES BLOWING BLOCK (REDESIGNED)

- Color coded cartridge design
- Maintenance time reduced by at least 30%
- Full-length piston sleeve protects block from wear



MATRIX SERIES PISTONS

- Compatible with all versions of the blowing block
- Substantial savings on maintenance kits



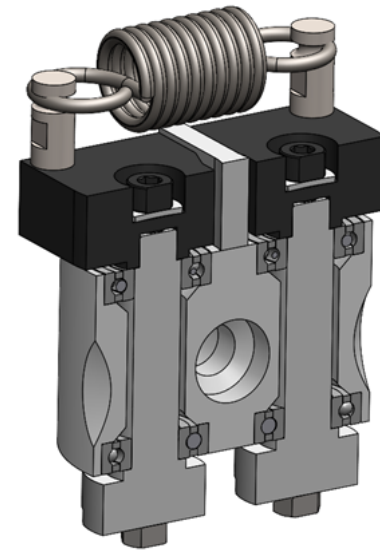
ROTARY UNIONS

- Own production (water-, air- and electrical distribution rotary unions)
- For all machine generations
- Only OEM seal/gaskets kits are used in production
- 100% exit testing before shipment



TRANSFER ARM HEADS

- Improved design for transfer arm heads
 - Machined in aluminum: stronger & 20% lighter
 - Bushings replaced with ball bearings
 - Replaceable striker plate and spring holders



CAMS

- Over 100 cam models available
- Deeper surface hardening extending their service life



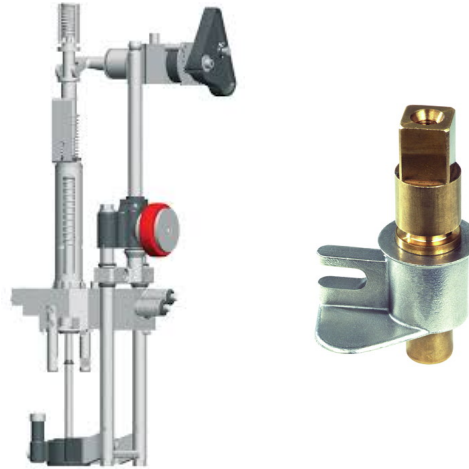
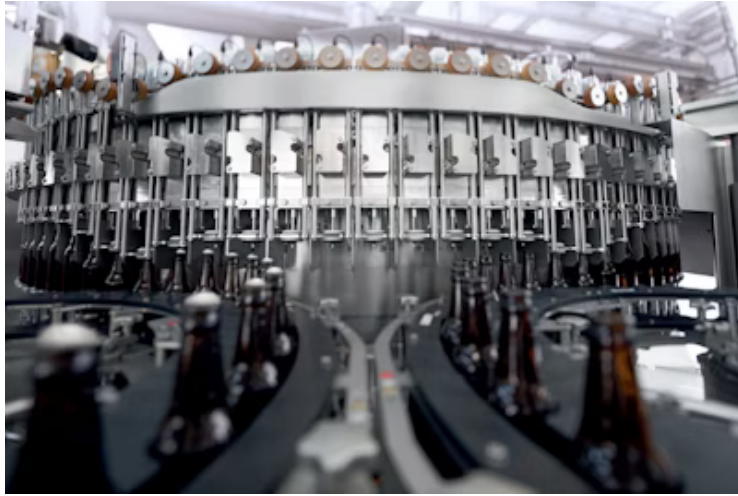
BELTS, LAMPS, DAMPERS & MORE

- All models available at competitive price
- Longer-lasting shock absorbers
- Maintenance lists



PRODUCT CATALOGUE

FOR FILLING MACHINES SIDEL, SIMONAZZI, SASIB, ALSIM



SIDEL

SIMONAZZI

SASIB



ALSIM

ASEPTIC FMa



FILLERS OF SIDEL FACTORIES

- Parts for fillers and rinsers of all machine generations and production sites
- Spare parts made in Europe only
- Produced by OEM's suppliers
- Exclusive solution: parts for aseptic fillers maintenance. Also installation and microbiological validation based on maintenance results are possible



Laval
service

THANKS FOR YOUR INTEREST!